

# Winterm™ 3000 Series Local Smart Card Administrators Guide

Issue 031904

This page intentionally blank.

# **Winterm™ 3000 Series Local Smart Card Administrators Guide**

**Issue 031904**

883826-01 Rev. A  
March 2004

Wyse Technology Inc.  
3471 North First Street  
San Jose, CA 95134-1801

This page intentionally blank.

## Copyright Notice

© 2004, Wyse Technology Inc. All rights reserved.

This manual and the software and firmware described in it are copyrighted. You may not reproduce, transmit, transcribe, store in a retrieval system, or translate into any language or computer language, in any form or by any means, electronic, mechanical, magnetic, optical, chemical, manual or otherwise, any part of this publication without express written permission.

## End User License Agreement (“License”)

A copy of the Wyse Technology End User License Agreement is included in the software and provided for your reference only. The License at <http://www.wyse.com/license> as of the purchase date is the controlling licensing agreement. By copying, using, or installing the software or the product, you agree to be bound by those terms.

## Trademarks

WYSE is a registered trademark and Winterm is a trademark of Wyse Technology Inc.

ICA is a registered trademark and MetaFrame is a trademark of Citrix Systems Inc.

Microsoft, Windows, Windows CE, Windows NT, Windows XP, and Windows Terminal Server are registered trademarks of Microsoft Corporation.

All other products are trademarks and/or registered trademarks of their respective companies.

Specifications subject to change without notice.

## Restricted Rights Legend

You acknowledge that the Software is of U.S. origin. You agree to comply with all applicable international and national laws that apply to the Software, including the U.S. Export Administration Regulations, as well as end-user, end-use and country destination restrictions issued by U.S. and other governments. For additional information on exporting the Software, see <http://www.microsoft.com/exporting>.

## Ordering Information

For availability, pricing, and ordering information in the United States and Canada, call 1-800-GET-WYSE (1-800-438-9973) or visit us at <http://www.wyse.com>. In all other countries, contact your sales representative.

This page intentionally blank.



# Contents

Introduction	1
Wyse Technical Support	1
Links to User and Administrator Guides and Services	2
Link to Add-on Installation Information	2
Before You Begin Installing the Add-on	2
Determining the Amount of Free Flash Memory	3
Obtaining the Add-on Package from Wyse Technology	4
Verifying an Add-on Package Contents	4
Installation Files	5
Removal Files	5
Wyse Local Smart Card	6
About the Add-on	6
About the Wyse LSC Manager	6
Features	6
Requirements and Recommendations	7
Important Feature Information	7
Smart Card Client Software and Manager Software	7
Supported Smart Card Vendors and Models	8
Guidelines for Installing the Smart Card Manager	9
Installing Smart Card Manager from Downloaded Files	9
Guidelines for Using the Smart Card Manager	9
Selecting Connections	10
Configuring Security	11
Selecting Users	11
Creating Smart Cards	12

## List of Figures

1	Control Panel window	3
2	Add-on dialog box - Flash Memory tab	4

## List of Tables

1	Supported Smart Card Vendors and Models	8
---	---	---


This page intentionally blank.

---

# Winterm™ 3000 Series Local Smart Card Administrators Guide

Wyse Local Smart Card Add-on is a feature-specific software component that can be installed on a Winterm™ 3000 Series Thin Client without touching the underlying operating system files located in flash memory.

---

 **Caution**

The procedures presented in this document are intended for use by system administrators. Untrained persons should not attempt to use these procedures.

---

 **Note**

Wyse Local Smart Card (LSC) requires the Wyse Personal Computer/Smart Card (PC/SC) 2.0 Add-on. Be sure that the Wyse PC/SC 2.0 Add-on is installed *prior* to Wyse LSC installation. For Wyse PC/SC 2.0 installation procedures, refer to *Winterm™ 3000 Series Add-on Administrators Guide*.

---

## Introduction

This guide is intended for administrators of the Winterm™ 3000 Series Thin Client. It provides instructions on preparing to install the Local Smart Card Add-on as well as instructions on obtaining and verifying the Add-on. It also provides detailed procedures for installing, removing, and using the Add-on.

For Winterm™ 3000 Series Thin Client instructions on installing Add-ons using Rapport Administrative Software, Remote Administrator 3000 (RA3000), or FTP Pull, refer to *Winterm™ 3000 Series Add-on Administrators Guide*.

For Winterm™ 3000 Series Thin Client instructions on removing Add-ons using Local Controls or Rapport Administrative Software, refer to *Winterm™ 3000 Series Add-on Administrators Guide*.

---

## Wyse Technical Support

To access Wyse technical resources, visit AskWyse.com [AskWyse.com](http://www.wyse.com). If you still have questions, e-mail your question using the Wyse [Support Request Form](#), or call Customer Support at 1-800-800-WYSE (toll free in U.S. and Canada). Hours of operation are from 7:00 am to 7:00 pm CST, Monday through Friday.

To access international support, visit <http://www.wyse.com/worldwide>.

## Links to User and Administrator Guides and Services

If you need to upgrade your CE .NET operating system, contact Wyse customer Support at: <http://www.wyse.com/serviceandsupport>.

The *Winterm™ 3000 Series Users and Administrators Guide* is available for download from the Wyse Products Quick Reference site at:

<http://www.wyse.com/products/winterm/quickstart/3000.htm>.

The guide explains how to use and administer the Winterm 3000 series Thin Clients. It covers the following topics:

- **Regulatory Notices** - Copyright, software license, and FCC notices and statements.
- **Introduction** - General information about the CE .NET-based Thin Clients powered by Microsoft Windows CE .NET®, references to online resources, and terms and conventions.
- **User Instructions** - Thin Client login, shut down, and functions available to user and guest level operators.
- **Administrator Instructions** - Server environment, initial Thin Client setup, administrator settings, and remote administration and software upgrades.

## Link to Add-on Installation Information

The *Winterm™ 3000 Series Add-on Administrators Guide* provides information and procedures for installing Add-ons and is available for download from the Wyse Products Quick Reference site at:

<http://www.wyse.com/products/winterm/quickstart/3000.htm>.

---

## Before You Begin Installing the Add-on

Before you begin installing the Add-on, be sure that you have addressed the following:

- The Add-on procedures work only for Winterm 3000 series Thin Clients with firmware version 3.5 or later. If your Thin Client has an older version of firmware, you must first upgrade to version 3.5 or later.
- Ensure that your Thin Client will have at least 200 kB of flash memory free *after* the Add-on is installed. To determine free flash memory, refer to “Determining the Amount of Free Flash Memory” on page 3.
- If there is insufficient free flash memory available, you may choose to remove existing Add-ons (including those that may have been installed by the factory or bundled with a firmware upgrade) to make room for others (available from Wyse Technology) to be installed.
- Replacing an Add-on with one of the same type but from an older software build will cause user settings specific to the Add-on to be lost.
- If you install an Add-on and later downgrade installed firmware, and if the Add-on is not bundled with the downgrade image, it will be lost.

## Determining the Amount of Free Flash Memory

The amount of flash memory currently free is determined by using the **Add-on** dialog box.

To determine the amount of free memory, complete the following procedures:

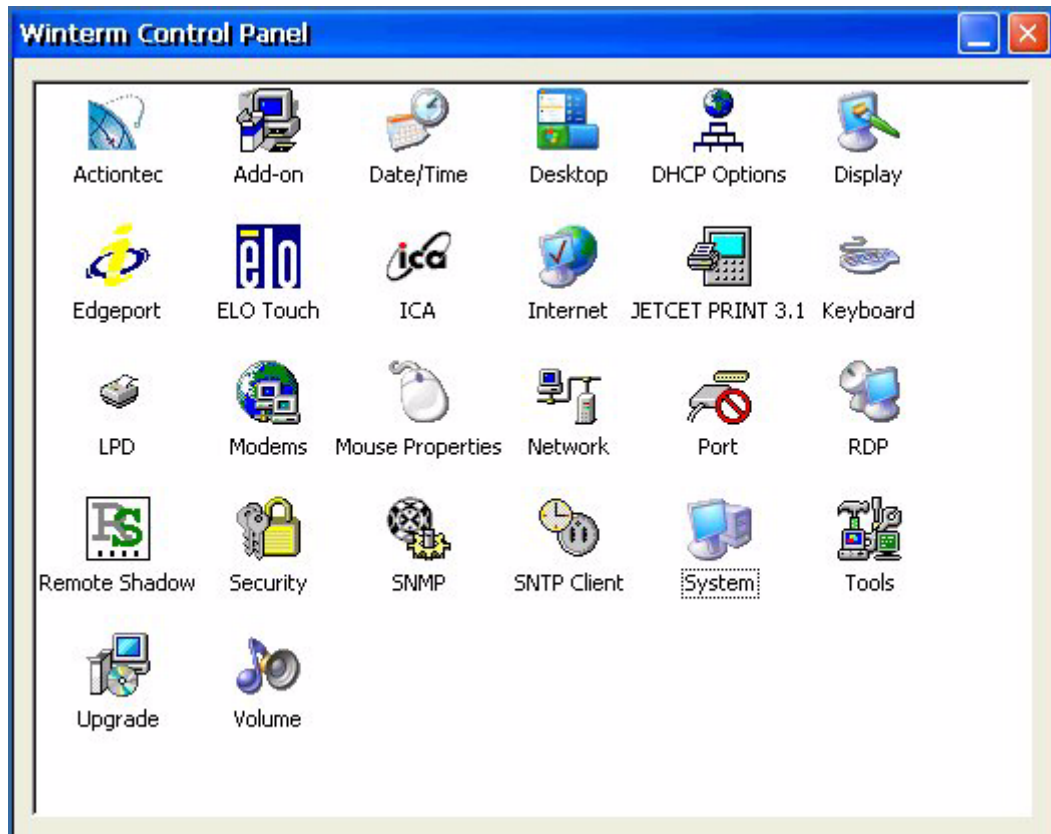
1. Log on to the Thin Client as administrator.
2. Click **Start | Settings | Control Panel** to open the Control Panel window (see Figure 1).



### Note

If you are not using the New Desktop option, you can open the Control Panel window by clicking the Control Panel command button in the Connection Manager.

Figure 1 Control Panel window



3. Double-click the **Add-on** icon to open the Add-on dialog box.

4. Click the **Flash Memory** tab to view the total and free amounts of flash memory (see Figure 2).

**Figure 2 Add-on dialog box - Flash Memory tab**



---

## Obtaining the Add-on Package from Wyse Technology

For availability, pricing, and ordering information in the United States and Canada, call 1-800-GET-WYSE (1-800-438-9973) or visit us at <http://www.wyse.com>. In all other countries, contact your Wyse sales representative.

### Verifying an Add-on Package Contents

Generally, an Add-on package is downloaded from the Wyse site in self-extracting compressed (.exe) format. It is recommended that you extract it into its own folder and verify that it contains four Add-on scripts. Two scripts are for the installation of the Add-on, and two scripts are for the removal of the Add-on. The content is as follows:



#### Note

The Add-on package may be extracted to a shared folder but the sub-folder must be present in this folder.  
RSP files are for use by Rapport Administration Software only for installing and removing an Add-on.

## Installation Files

Installation files include the following:

- ADDON\_<ADD-ON NAME>\_BXXXX.RSP  
(This script is used for all non CE .NET products - OS version earlier than 4.x - on Rapport 3.0 or 4.0.)
- ADDON\_<ADD-ON NAME>\_BXXXX\_CEN.RSP  
(This script is used for all CE .NET products - OS version 4.x or later - on Rapport 4.0.)
- Two sub-folders of the same name as the script names, each containing the following:
  - <add-on image file name>.bin
  - params.ini  
(This is the initialization file associated with the binary file. It cannot be used with other Add-ons.)
  - bootstrap212.exe  
(This bootstrap file is needed for installing Add-ons to Model 3350 Thin Clients using RA3000 or FTP pull only, and may not be present in all Add-on packages.)

## Removal Files

Removal files include the following:

- RM\_ADDON\_<ADD-ON NAME>\_BXXXX.RSP  
(This script is used for all non CE .NET products - OS version earlier than 4.x - on Rapport 3.0 or 4.0.)
- RM\_ADDON\_<ADD-ON NAME>\_BXXXX\_CEN.RSP  
(This script is used for all CE .NET products - OS version 4.x or later - on Rapport 4.0.)
- Two sub-folders of the same name as the script names, each containing the following:
  - Z.TXT  
(This is a place holder for the extraction package.)



### Note

It is necessary to include an empty text file (Z.txt) in the sub-folder so that the sub-folder extracts. This file may be deleted after extraction, however, no harm will be done if the file remains.

---

## Wyse Local Smart Card

Wyse Local Smart Card (LSC) is a utility that allows Winterm™ 3000 Series Thin Client users to implement Smart Card technology. With Wyse LSC Thin Client users can quickly access Terminal Server applications with Single Button Connect while maintaining the high security of Smart Card technology. Users of Wyse LSC do not need to remember usernames and passwords to login, nor do they need to logout when ending a session. With LSC, all user credentials are stored on the Smart Card and all active terminal sessions are securely closed when the Smart Card is removed from the Smart Card reader. This Add-on software release for the Winterm™ 3000 series uses the CE .NET 3.5.1 with Service Pack 1 operating system or later.

### About the Add-on

Version: 2.0

Wyse build: 0013

Compatible Winterm™ 3000 Series Thin Client Version(s): 4.0.x or 4.x

Known Issues and Workarounds: You must uninstall Local Smart Card Add-on (scmcardaddon.bin) build 0012 and earlier before upgrading to version 2.0.



#### Note

Wyse Local Smart Card (LSC) requires the Wyse Personal Computer/Smart Card (PC/SC) 2.0 Add-on. Be sure that the Wyse PC/SC 2.0 Add-on is installed *prior* to Wyse LSC installation. For Wyse PC/SC 2.0 installation procedures, refer to *Winterm™ 3000 Series Add-on Administrators Guide*.

### About the Wyse LSC Manager

Version: 2.0

Wyse build: 0107

### Features

Wyse LSC includes the following features:

- **Single Button Connect** - Simplifies the local login process by presenting a single button for a user to click to automatically launch ICA, RDP, or TEC sessions.
- **Smart Card Client Software** - Executes the user credentials stored on the Smart Card. It is responsible for reading and writing data onto the Smart Card as well as automatically typing login information into the User Login dialog box.
- **Smart Card Manager Software** - Allows administrators to create Smart Cards for use with Winterm™ 3000 series Thin Clients. Administrators can program the Smart Card with particular user credentials (for example, the PIN, username, password, domain, and so on). Smart Card Manager software writes data to the Smart Card using a custom format developed by Wyse, which can then be read by the Smart Card Client software running on a Thin Client.
- **Smart Card Profile** - Contains specific data stored on the Smart Card file system. The Smart Card Profile contains enough information to provide user authentication for

various session types (for example, ICA or RDP) and also the connection name to the server providing the service (for example, MetaFrame Server).

- **Complete file package** - All the files needed to use Wyse Local Smart Card are provided, including Registry files (setting.reg and factory.reg), Smart Card reader drivers, Smart Card file system access drivers, and Smart Card GUI modules (between the WBT Login and the Connection Manager).

## Requirements and Recommendations

Wyse LSC requirements and recommendations include the following:

- You must be running CE .NET version 4.0 or later.
- Wyse Personal Computer/Smart Card (PC/SC) 2.0 must be installed prior to installing Wyse Local Smart Card.
- Supported platforms include Microsoft Windows 2000 Professional and Microsoft Windows 2000 Server (Microsoft Windows XP Professional and Microsoft Windows 2003 Server is NOT supported).
- A supported Smart Card reader must be attached to a Winterm™ 3000 series Thin Client USB port (for a list of supported Smart Card vendors and models, refer to “Supported Smart Card Vendors and Models” on page 8).
- Only one active Terminal Server session at a time can access the Smart Card reader. The first Terminal Server session retains access until the session is disconnected. Subsequent Terminal Server sessions do not disturb the first Terminal Server session while the first is connected. Subsequent Terminal Server sessions must be reconnected if Smart Card reader access is desired and the first session has already been closed.
- Multiple Smart Card readers on the same Winterm™ 3000 series Thin Client is not supported.

## Important Feature Information

This section provides important information on the following features:

- Smart Card Client Software and Manager Software
- Supported Smart Card vendors and models

### Smart Card Client Software and Manager Software

Smart Card Client software executes the user credentials stored on the Smart Card. Each Smart Card contains a single instance of the following data set, called the Smart Card Profile:

- Thin Client Username
- Thin Client Password
- One or more Session Credentials (consisting of the Session Name, Session Username, Session Password, and Session Domain).

When a Smart Card is initially programmed using the Smart Card Manager software, the administrator sets a default PIN and provides this PIN to a user. This default PIN is then used for the initial Smart Card access to a Thin Client. However, before the Connection Manager opens, the user is prompted for a new User PIN to personalize the Smart Card. From that moment forward, the default PIN is replaced with the personalized User PIN

and the user is never prompted for a new User PIN again (unless the card is re-programmed by an administrator).

Wyse Local Smart Card also includes an Administrator PIN which can be used to gain access to a Smart Card Profile. This Administrator PIN is necessary if an administrator must re-program a Smart Card or access Smart Card information.

For security purposes, the Smart Card has a maximum PIN verification count. That is, if a PIN is incorrectly entered for a number of consecutive attempts (the number is programmed by the administrator), the Smart Card becomes “Blocked”. When a Smart Card is “Blocked”, it is inoperable. To recover Smart Card usage an administrator must use the Un-Block PIN.

## Supported Smart Card Vendors and Models

Wyse Local Smart Card supports several Smart Card vendors and models. The software that you purchase to use with the LSC compliant readers will determine the type of actual Smart Cards that comply with your hardware. As long as the software you purchase uses LSC standards, Wyse Local Smart Card is supported.

Wyse Local Smart Card supports the following Smart Card vendors and models (see Table 1):

**Table 1 Supported Smart Card Vendors and Models**

Vendor	Model	Description	Web Link
SCM Microsystems	SCR301	Smart Card Reader USB	<a href="http://www.scmmicro.com/security/smart.html">http://www.scmmicro.com/security/smart.html</a>
Schlumberger	Reflex USB P/N 901251	SC Reader USB	<a href="http://www.axalto.com/infosec/reflex_usb.html">http://www.axalto.com/infosec/reflex_usb.html</a> and <a href="http://www.scmegastore.com">http://www.scmegastore.com</a>
Axalto	Cryptoflex e-gate 32K cards, no plug 5-pk ID.401025	Smart Card	<a href="http://www.axalto.com/infosec/cryptoflex_win.html">http://www.axalto.com/infosec/cryptoflex_win.html</a> and <a href="http://www.scmegastore.com">http://www.scmegastore.com</a>
Axalto	Cyberflex Access 8K Smart Card	Smart Card	<a href="http://www.axalto.com/infosec/cyberflex_access.html">http://www.axalto.com/infosec/cyberflex_access.html</a> and <a href="http://www.scmegastore.com">http://www.scmegastore.com</a>
Active Card	Active Card v2.0 Part Number ZFG-9800-A	Smart Card Reader USB	<a href="http://www.activcard.com/products/usb_reader.html?m=2">http://www.activcard.com/products/usb_reader.html?m=2</a>
OmniKey	Cardman 3121	Smart Card Reader USB	<a href="http://www.omnikey.com/en/produkt_details.php3?produkt=1&amp;variante=47">http://www.omnikey.com/en/produkt_details.php3?produkt=1&amp;variante=47</a>

**Table 1 Supported Smart Card Vendors and Models, Continued**

Vendor	Model	Description	Web Link
OmniKey	Cardman 2020	Smart Card Reader USB	<a href="http://www.omnikey.com/en/produkt_details.php3?produkt=1&amp;variante=3">http://www.omnikey.com/en/ produkt_details.php3?produkt=1&amp;variante=3</a>
Cherry Integrated Keyboard	RS 6700USB Part Number G83-6702 Smart Board	USB Keyboard with Integrated Smart Card Reader	<a href="http://www.cherrycorp.com">http://www.cherrycorp.com</a>

## Guidelines for Installing the Smart Card Manager

To install the Smart Card Manager from downloaded files, complete the following installation procedures.

After installation the operating system detects the card reader automatically upon its being plugged in. A Microsoft® wizard will guide you through hardware installation.



### Note

User names and passwords on the Smart Card must match user names and passwords for local security on the Thin Client.

If you would like to autostart a connection, make sure that the connection is autostart enabled for the user.

The name(s) of the connection(s) on the Smart Card must match the name(s) of the connection(s) on the Thin Client.

## Installing Smart Card Manager from Downloaded Files

1. You will receive a shipment confirmation e-mail that includes the sales key and download instructions.
2. Launch the self-extracting compressed file that you downloaded from the Wyse Web site, `WSCM_100_BLDxxxx.exe` (xxxx is the build number of the Smart Card Manager).
3. Expand the contents to your desired directory (path).
4. Run `setup.exe` from the path you designated in step 3, for example, `desired directory\Winterm Smart Card Manager\apps`.

## Guidelines for Using the Smart Card Manager

Before running the Add-on for the first time, you will be prompted with a dialog to enter your license key number. After this initial dialog, you will gain access to the main Local Smart Card program.

The Local Smart Card program consists of a Tab-type user interface with menus and command buttons.

**Note**

Whenever the Exit command button is used a confirmation dialog appears. The Help command button invokes a standard Window Help file.

This section provides information and general guidelines on:

- “Selecting Connections” on page 10
- “Configuring Security” on page 11
- “Selecting Users” on page 11
- “Creating Smart Cards” on page 12

## Selecting Connections

The Local Smart Card Manager allows you to create and save any number of connections, as well as the local username and password. Results are saved to a binary file, referred to as a template file. The maximum allowed connections that can be defined per card is 12 connections (assuming your Smart Card has enough file space).

You can either enter new data or load existing data from a template file. A template file allows data from “Select Connections” and “Security” screens to be saved for use at a later time (to create more cards with the same data). If you want to load an existing file, you must select the “Open Template” menu and use the windows “Open File” dialog. To create a new template, you must select the “New Template” menu and save to a unique template filename. By default, the program starts with a new untitled template.

All template filenames end in the extension .tpl. If no directory path is specified (that is, only a filename is provided) then the program uses the current path where the program is installed (default path is `C:\Program Files\Wyse Technology\Winterterm Smart Card Manager` - however this path can be modified during installation).

**Note**

The Local Username and Local Password edit fields, which will be used to logon to the Thin Client can remain blank.

The Connections list displays a list of all available connections that can be used. You can enter a new Connection by using the Add command button (to open the Add New Connection dialog box) or edit an existing connection by selecting a connection from the list and then using the Edit command button (to open the Edit Connection dialog box).

**Note**

Connection Name and Type must match those on the Thin Client.

You can delete one or multiple connections by selecting the connections and using the Delete command button.

The Options command button allows you to select ICA specific options and invokes an ICA Options dialog when you have selected an ICA connection from the Connections list.

**Note**

The Connections list can also be optional and can remain blank.

## Configuring Security

The Local Smart Card Manager allows you to configure security requirements for end-user Smart Cards. The security dialog contains a number of check boxes for configuring the security of the Smart Cards.

The Save Session Passwords On Smart Card check box is used to determine whether or not the passwords for each connection will be stored on the Smart Card and entered automatically by the Smart Card. If this check box is cleared, then the Smart Card would enter the username field automatically however, the end-user must manually enter the password for each use.

The Enter PIN Number check box is used to determine whether or not the end-user must enter a PIN Number. If this check box is checked, the following options appear:

- User must change PIN on first login - This check box determines whether or not the user must change the PIN Number on first login to the Thin Client.
- PIN allows non-numeric characters - This check box determines whether or not all non-numeric characters are allowed in the PIN.
- PIN must contain both numeric and non-numeric characters - This check box determines whether the PIN must contain a mix of alpha and numeric characters. This option is available only if the PIN allows non-numeric characters option is checked.

The PIN text boxes include (all PIN text boxes are mandatory if PIN security is used):

- The Minimum PIN Length text box must include a number between 1 and 8.
- The Maximum number of PIN retries before card is blocked text box must include a number between 1 and 99.
- The Default User PIN text box must contain at least the number of characters specified in the Minimum PIN length text box.



### Note

As long as the Smart Card remains inserted in the reader, there is no time-out (time limit) when an end-user is prompted for a PIN.

## Selecting Users

The Local Smart Card Manager allows you to select usernames from different domains. For each end-user that is selected there will be one Smart Card created. However, you can choose not to select end-users so that the Smart Cards will be generic and any number can be created. On the initial login using these generic Smart Cards, the end-user will be prompted to enter their username and this username will be saved to the Smart Card.

The Select Users Manually check box determines whether or not the administrator can select usernames individually. By default, this check box is clear (not checked) and the selection controls are disabled. If this check box is checked, the selection controls are enabled.

The Select Domain text box allows you to select one of the domains from your local network. You can also type in a domain.

The Available Users list displays a list of all the end-users in the currently selected domain. You can enter a new end-user by using the New User command button (to open the New User dialog box).

The Selected Users list displays a list of the end-users that you have added from the Available Users list. Each of the end-users in this list will have a Smart Card created for them.

You can add end-users by selecting one or more of the end-users from the Available Users list and using the Add command button. After saving the end-users (clicking **Save**), the Available Users list displays a list of all of the entered end-users.



**Note**

The Username and Domain text boxes are both mandatory when adding a new end-user.

You can remove end-users by selecting one or more of the end-users from the Available Users list and using the Remove command button.

## Creating Smart Cards

The Local Smart Card Manager allows you to write the data you have configured to the Smart Cards for use with the Winterm™ 3000 Series Thin Client. Data will be stored in two files on the Smart Card.

The Smart Card Reader text box displays a list of the available Smart Card readers (although usually there is only one reader connected to a Thin Client).

The Smart Card Type text box displays a list of the supported Smart Card types.

The Authentication Transport Key is used as the Administrator PIN. It is automatically populated with a default Authentication Transport Key, however you create your own Authentication Transport Key by checking the Change Transport Key check box (enabling the New Key command button) and clicking the New Key command button to open the Change Transport Key dialog box (where you must enter the new key and confirm it in the text boxes provided).

The Create Card command button will perform the following in the order presented:

1. Connects to the Smart Card reader (this is done before creating the first Smart Card only).
2. Verifies the Authentication Transport Key (If this verification fails, you will be prompted to re-enter the Authentication Transport Key).
3. If custom Wyse directory/files exist, formats the Smart Card.
4. Writes all configured data to the Smart Card (and to the custom files).
5. Displays a Success message notifying you that a Smart Card was successfully created and updates the Created <number of> Cards message.

The Format Card and Identify Owner command buttons (located in the Smart Card Tools area) can be used as follows:

- **Format Card** - This tool is used to remove all Wyse related files from the Smart Card. The Format Card command button opens a dialog which allows you to enter the Authentication Transport Key and remove the Wyse files. Upon completion, a dialog appears confirming success.
- **Identify Owner** - This tool is used to identify the owner of a Smart Card (for example, when a lost Smart Card is found). The Identify Owner command button displays a message dialog containing the owner name or error message.

The Finish command button exits the program. However, if all of the requested Smart Cards have not been created, the Finish command button displays an exit confirmation dialog box to make sure that you want to exit the program without creating all of the requested cards.

**Winterm™ 3000 Series Local Smart Card Administrators Guide  
Issue 031904**

Written and published by:  
Wyse Technology Inc., March 2004

Created using FrameMaker® and Acrobat®