

# DHCP & FTP Setup to Support Blazer platform

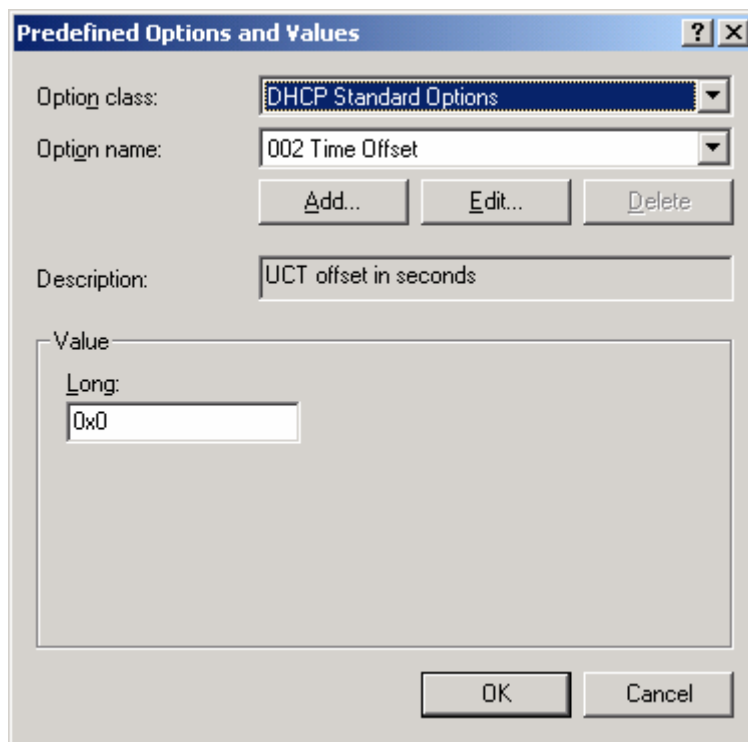
In order to automatically configure a 1200LE using a DHCP and a FTP server, you'll need to do the following.

## **DHCP Server Configuration**

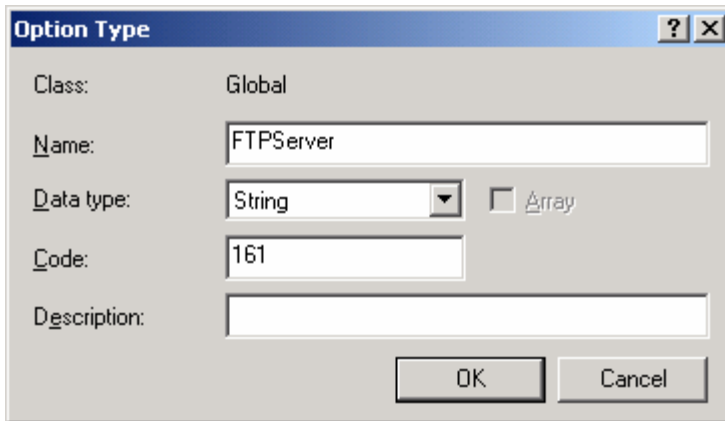
On the DHCP server, you'll need to add two Wyse vendor tags – 161 & 162. Tag 161 will identify the FTP server you wish the 1200LE to check for its configuration and firmware. Tag 162 will instruct the 1200LE the FTP directory to check.

If using Win2k's DHCP Server, the way to add a tag is to do the following:

1. Right-click My Computer and select **Manage**
2. Expand **Servers and Applications**
3. Highlight DHCP and click **Action | Set Predefined Options**
4. You should now be looking at the *Predefined Options and Values* screen



5. From here, click **Add**
6. Type the following information in so that it looks similar to this screen:

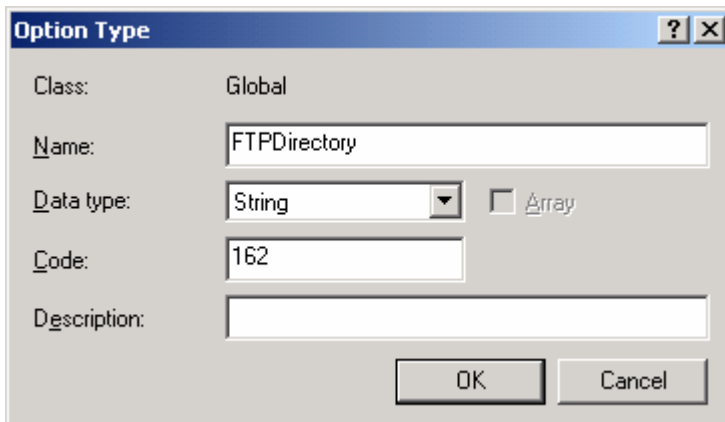


The dialog box titled "Option Type" has a blue header bar with a question mark and a close button. The main area is light gray and contains the following fields:

- Class:** Global
- Name:** FTPServer
- Data type:** String (selected in a dropdown menu), with an unchecked checkbox for *Array*.
- Code:** 161
- Description:** (empty text box)

At the bottom right, there are two buttons: "OK" and "Cancel".

7. Click **OK**
8. From the *Predefined Options and Values* screen, click **Add**
9. Type the following information in so that it looks like this:

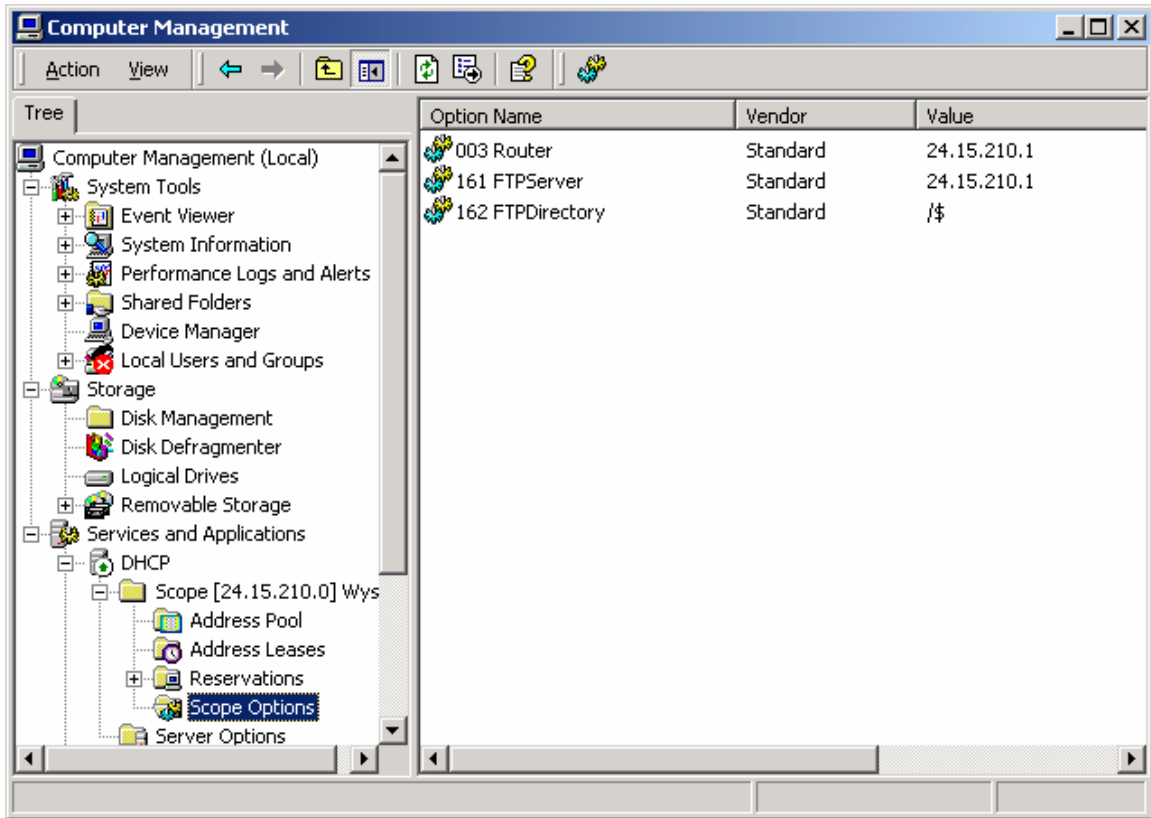


The dialog box titled "Option Type" has a blue header bar with a question mark and a close button. The main area is light gray and contains the following fields:

- Class:** Global
- Name:** FTPDirectory
- Data type:** String (selected in a dropdown menu), with an unchecked checkbox for *Array*.
- Code:** 162
- Description:** (empty text box)

At the bottom right, there are two buttons: "OK" and "Cancel".

10. Click **OK**
11. From the *Predefined Options and Values* screen, select the Option Name pulldown arrow and scroll down and highlight **161 FTPServer**
12. In the *Value String* field, type in the FTP server's IP address or name
13. Now look for and highlight **162 FTPDirectory**
14. In the *Value String* field, type in the following: `/$`  
 Note: this instructs the 1200LE to start from the FTP root directory and use the default Wyse path
15. Click **OK**
16. Now these two tags need to be added to the DHCP scope like so:



This completes the DHCP server configuration

### **FTP Server Configuration**

Create a subdirectory called "wnos" under the FTP root directory and copy the files utc\_b512 and wnos.ini into the \<ftproot>\wnos directory

### **WNOS Configuration**

Please read the wnos.ini file for help on modifying it.