

Setting up a CE based terminal in a locked down condition.

If you desire to restrict the user from accessing any local resources you can use the following instruction as a guideline. All official information is contained in the Administrators guide at

<http://www.wyse.com/products/winterm/quickstart/3000.htm>

1. Setup your connection as normal.
2. Open Control Panel.
3. Open the Security ICON by Double Clicking it.
4. Click on ADD user
5. Enter a user name, this is only used internally the user will not see it.
6. Make sure "Guest" is checked.
7. Select the connection(s) on the left and Click on Assign.
8. Click on Toggle Autostart
9. Click OK,

Add User Account

Enable Password Change

User Name: test

Password:

Confirm Password:

Account Privilege

Administrator

User

Guest

Allow Access to Connection Manager

Available Connections	Type
209.10.234.33	ICA
test TEC	TEC

Assign >

Unassign <

Up >

Down >

Toggle AutoStart >

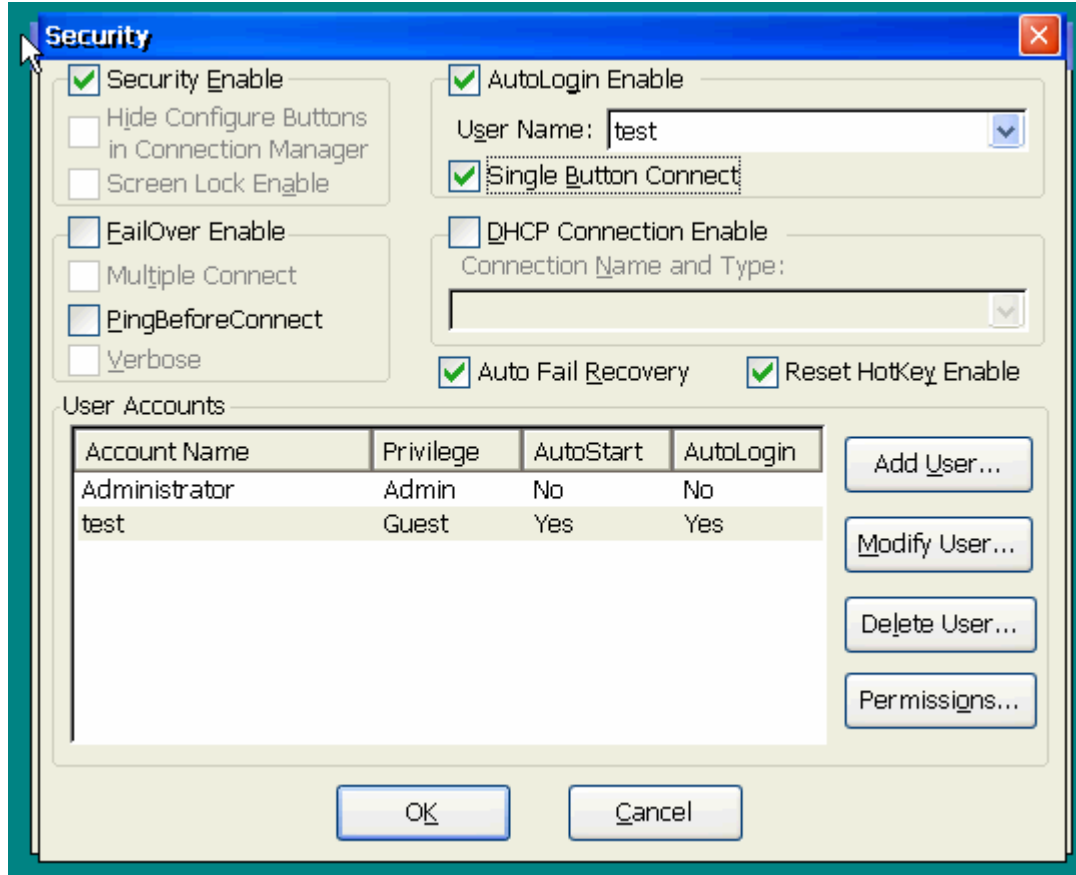
Assigned Connections	Type	AutoStart
209.10.234.33	ICA	Yes

OK Cancel

10.

11. Check Autologin Enable.
12. In the dropdown box select the user name previously created.
13. This will automatically select Security Enable.
14. Check Auto Fail Recovery
15. Check Single Button Connect.

16. Click OK



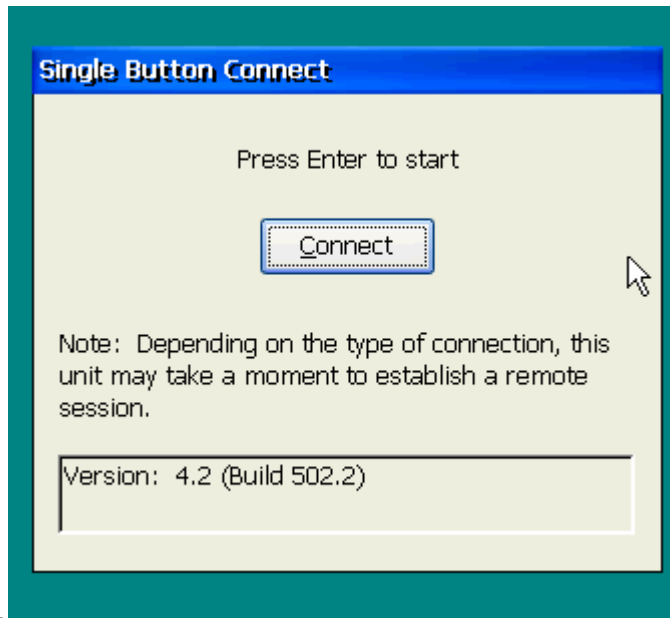
17.

18. Close Control Panel

19. The terminal will tell you it has to restart

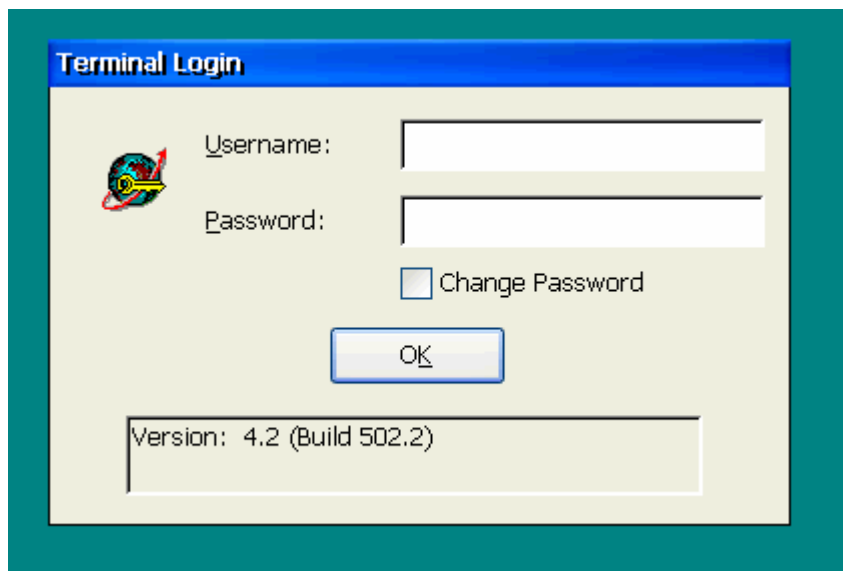
20. Select Restart now

21. Terminal will come up with the following screen.



22.

23. Pressing any key will establish the connection defined.
24. Exiting the session will bring the user back to this screen and they will not have access to any Local Resources.
25. If you, the administrator need to get in to make some changes, at this screen press the ALT F4 key. This will bring up a local login screen as below.



26.

27. Enter administrator as the user name and if you have not changed the password it is blank by default.